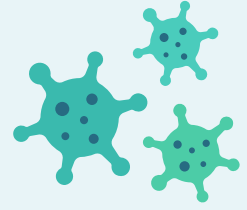




Guidance for Community Health Centres Administering Vaccines



- 01 Ensure regular and ongoing delivery of key vaccination messages
- 02 Ensure that community workers have an understanding of the safety and efficacy of available COVID-19 vaccines based on the latest evidence
- 03 Ensure accurate information related to each of the specific vaccines that is available in your setting (e.g. safety, efficacy, list of ingredients)
- 04 Ensure that the vaccine roll-out occurs in orderly phases, starting with groups at highest risk of severe COVID-19 disease. The numbers in each phase need to be realistic in order to ensure 'crowd control'
- 05 Ensure that all vulnerable populations are included in the appropriate phase
- 06 Ensure that vaccines are being stored properly, including any temperature requirements
- 07 Ensure that the vaccine stock is secure (to protect against theft or sabotage)
- 08 Ensure that those administering the vaccines are properly trained and supervised
- 09 Ensure that treatment will be available 'on site' for any anaphylactic reactions, which typically occur within 15 minutes
- 10 Ensure that basic data is collected related to vaccinations